

hiking trails in the vicinity

SILVERFONTEIN HIKING TRAIL

This is a one or two day trail, across the Berg River from the Riebeek Valley, on the slopes of the Elandsloofberge, above Voëlvlei Dam.

Tel: **023-232 0531**

WATERFALL FORESTRY RESERVE

On the other side of the mountain from Silverfontein, the waterfall is close to the parking area (great in winter), then contour walks. Run by Cape Nature but permits from Tulbagh Tourist Office.

Tel: **023-230 1348, 023-230 1375**

MURLUDI HIKING TRAIL

To the north of Tulbagh, in the valley. 4 or 10 km routes. Fynbos, birdlife, small game.

Tel: **023-230 0732**

DIE HEL (GROOT WINTERHOEK)

Two day, camping in the wild. Great pools and rock formations. The pool at Die Hel is the biggest rock pool in the Western Cape. At over 15 meters wide swimming in its pristine mountain water is an unforgettable experience. Die Hel is in the Winterhoek Mountains near Porterville and is only accessed through the Cape Nature reserve. Overshadowed by the rugged cliffs of a deep gorge, it is fed by a sparkling 5-metre waterfall.

Most people hike to Die Hel, an easy 5 km hike from the overnight huts at De Tronk. The descent down the gorge, however, is dangerous and very steep, and shouldn't be attempted by the elderly, very unfit or by young children. An overhang on the left as you climb down the gorge is the site of some ancient rock art, executed hundreds, perhaps thousands of years ago by the San people who lived in the area until the European settlers arrived.

The adventurous might like to try kloofing into Die Hel, a spectacular trip that ends with a 5-metre jump into the pool. The route begins just before De Tronk, and requires boulder climbing, wading and swimming through tunnels between the rocks.

Tel: **021-659 3500** Web: www.capenature.co.za

where we are



For further information contact:

Riebeek Valley Tourism

Tel: **022-448 1545**

E-mail: tourism@riebeekvalley.info

Web: www.riebeekvalley.info

carl thunberg **hiking route**



the
riebeek
valley
hiking
routes
carl thunberg trail



Carl Thunberg Route – Kasteelberg

Carl Peter Thunberg was a Swedish botanist and explorer who ascended Kasteelberg in 1774, and who left a vivid description; this path leads to the approximate place he summited.

The start of the trail is Pulpit Rock Winery, which is just north of Riebeek West on the R311.

Walk up the path between the vines (but please do not stray into the cultivated area – remember, this is a working farm) until you are above the vineyards; below you will be Pulpit Rock Winery.

At this point (GPS 33°20'31"S 18°50'37"E), at the side of a gully you will see a jeep track running sharply up to the right; it goes up the slope of the mountain. Follow this. It soon turns into a narrow trail until you arrive at a very large cairn (GPS 33°20'30"S 18°50'30"E) indicating the route up.

The next landmark is a large wild olive tree (GPS 33°20'32"S 18°50'19"E). Keep on the path and you will see it follows a ravine up to a series of rocky outcrops, around which you must skirt. Once above these there is no formal path but the vegetation becomes much lower and it is easy to walk up to the summit.

Just avoid the obvious sheer rock faces and the route up, although fairly steep, is not difficult. Make a note and return by the same route.

On the summit you can scramble along the ridge, savouring ravishing views of Table Mountain and the Cape in one direction, and into the Piketberg, Cederberg and beyond in the other.

For security reasons you **must** be in possession of a permit whilst on the mountain – it may be obtained from:

Riebeek Valley Tourism, on the square in Riebeek Kasteel during published opening hours only.



View of northern ridge of Kasteelberg

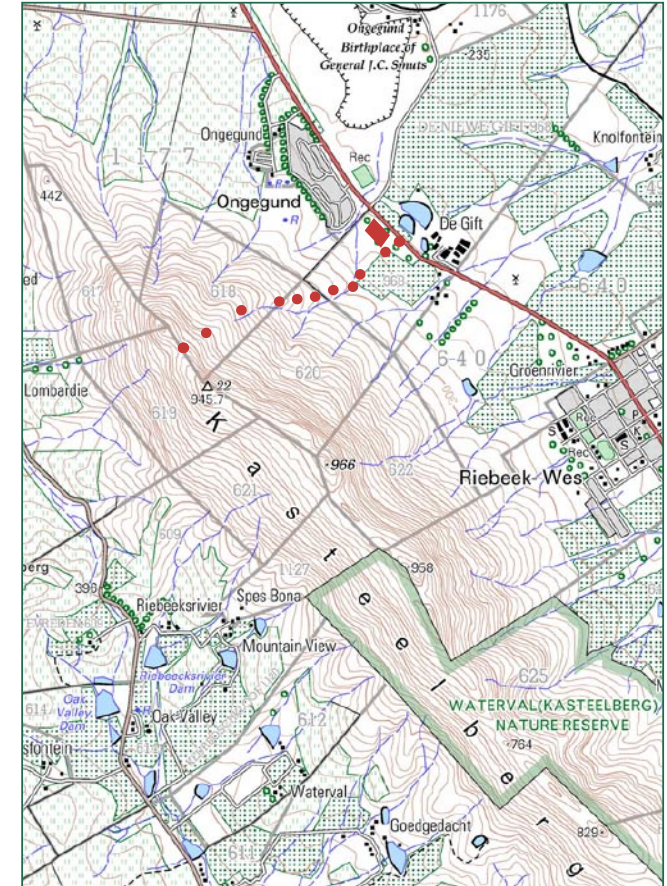
DISCLAIMER OF LIABILITY All persons entering this area and using its facilities, do so entirely at their own risk. Riebeek Valley Tourism and/or its employees and/or agents and/or its successors in title shall not be liable for any damage, loss, theft, injury, accident or death suffered by any person, howsoever caused. Right of Admission Reserved.

CONDITIONS

- 1 A permit for each hiker must be carried on the trail at all times. Sign in at the start of the walk, and sign out when complete. Notify someone of your route and when you expect to be back.
- 2 Permits may be obtained from Riebeek Valley Tourism on the square in Riebeek Kasteel during opening hours.
- 3 Do not approach any of the wildlife, especially the baboons, and especially **do not feed** them or leave food lying around – they are still in their natural state and respect humans as superiors. Feeding them will change this.
- 4 No smoking and under no circumstances light a fire.
- 5 Clichéd as it might sound, take nothing but photographs. Some of the vegetation on Kasteelberg is endemic to this mountain and any disturbance could endanger its survival.
- 6 If you encounter any of the San art or other historical features respect them; they are of cultural importance, and the San sites reflect spiritual places for these people. They are also protected by law.
- 7 In an emergency there is good cell phone reception on most (not all) of the mountain. The number for the local police is 022-461 8100.
- 8 Enjoy the hike!



PULPIT ROCK WINERY
R311, just outside Riebeek West
Open: Mon - Fri 8am - 5pm and Sat 9am - 2pm
tel: 022-461 025
e-mail: info@pulpitrock.co.za
web: www.pulpitrock.co.za



EMERGENCY RESCUE NUMBERS
Wilderness Search & Rescue: 021-937 0300
Connect to METRO Rescue Centre
Mountain Rescue Services:
021-948 9900 or 107
Ambulance: 10177

DON'T START FIRES YOU CAN'T STOP. BE FIREWISE.