

other cycling routes

FARM ROADS around the VALLEY

There are two routes in the Valley (see separate leaflets), one from Riebeek Kasteel, the other Riebeek West. They are not unduly challenging, and allow riders to take in the stunning mountain and landscape vistas that make up the area.



Kasteelberg ifrom farm road

PAARDEBERG FARM ROADS

Neighbouring Paardeberg is a virtually self-contained granite outcrop, containing numerous sand farm roads with little passing traffic. A great opportunity to explore a little known, scenic area on two wheels.



Farm road on Paardeberg

PORSELEINBERG to WELLINGTON

This road begins just west of Hermon (from the R46), essentially following the route of the Berg River, until it reaches the Lady Loch bridge, which leads to Wellington. Unless you intend to do the return trip by cycle, you will need to organise to leave transport in the town.



Porseleinberg road

BO-HERMON to WELLINGTON

This route starts east of Hermon, and is signposted Bo-Hermon. As above you will need to determine whether you wish to return by the same way, or plan to have transport in Wellington. Soon after starting you



The road to Groenberg

will pass the entrance to Bartholomeus Klip (great idea to plan another trip and do a game drive and lunch here), then head towards the Groenberg, the beacon for your destination.

where we are



For further information contact:

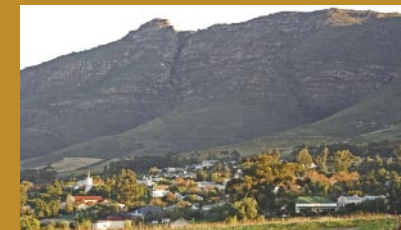
Riebeek Valley Tourism

Tel: **022-448 1545**

E-mail: **tourism@riebeekvalley.info**

Web: **www.riebeekvalley.info**

riebeek west cycling route



the riebeek valley cycle routes

riebeek west route

riebeek west/valley farm road trail

The Riebeek West farm road cycle trail starts in Voortrekker Road, in front of the Dutch Reformed Church. There is ample parking in the street.

Travel north along Voortrekker Road until you reach the top of a short incline where a right turn to **Gouda** is indicated. Take this and sail down the hill towards the silos and Riebeek West Station. Just beyond the road becomes sand.

Cross over the railway line (take care, this line is in use!) and ride between endless vineyards. At the 4,7km point the road makes a sharp left turn and you continue down a gentle decline, until once again the railway line appears on your left. Shortly thereafter take a left turn and cross the line once again.

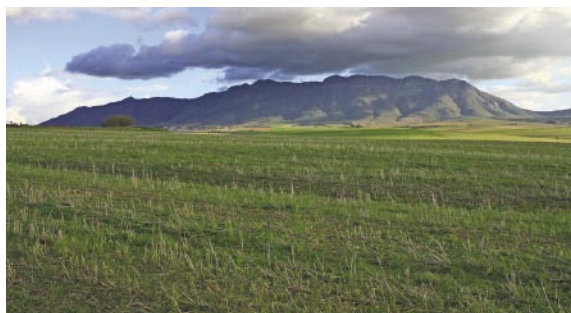
You will have the magnificent Winterhoek Mountains on your right and at the top of a rise the road makes a 90° turn to the left. Keep on this until you reach a T-junction, where you turn left towards Kasteelberg and PPC, where you'll turn left again.

Cross the railway line and the road becomes tar. At the top of the hill turn left back into Riebeek West, passing **Groenrivier** on the right, and into Voortrekker Road once more, to the starting point.

Enjoy the wonderful views of seemingly limitless vineyards, wheatfields and Kasteelberg.



R311 into Riebek West



Eastern flank of Kasteelberg from the route

