



The Owner's Cottage



La Provençale



The Owner's Cottage

THE OWNER'S COTTAGE

The Owner's Cottage at Grande Provence is a testament to period grandeur and contemporary luxury. Comprising the beautifully appointed Cottage are four rooms, a deluxe suite, conservatory, lounge, swimming and spa pool area. Blanketed in a palette of 'charcoal grey' and 'white linen', the rooms beckon an indulgent experience. Lush lawns edged with dark green hedges contrast with creamy travertine tiles and inset pebbles, while white walls delineate the deck chairs and lounging areas, juxtaposing the cool and crisp swimming pool.

LA PROVENÇALE

La Provençale, our latest accommodation, offers contemporary appointment and comfort for up to four guests, on a Bed and Breakfast basis. An outdoor courtyard with pool offers opportunity to enjoy South Africa's lovely weather amidst private gardens.

For rates please email reservations@grandeprovence.co.za or telephone 021 876 8600.

DIRECTIONS AND GPS

From Cape Town (+/- one hour)

Take the N1 highway to Paarl. Take exit number 55 Paarl-Main Road/Franschhoek. Turn right at the bottom of the exit and drive for 1.3 km, passing under the N1 highway. Turn left into the R45 to Franschhoek at the Franschhoek sign.

From Stellenbosch (+/- 30 minutes)

Take the Helshoogte Pass (R310) toward Franschhoek (+/- 16km). As you make your way over the pass, you will drive through the village of Pniel. Towards the end of the pass you will see Boschendal Wine Estate on your right-hand side and cross a railway line before reaching a T-junction. At the T-junction, turn right onto the R45 to Franschhoek.

Our main entrance coordinates are:

- + S 33° 53' 57.6"
- + E 19° 06' 10.5"

The Owner's Cottage coordinates are:

- + S 33° 54' 0.6"
- + E 19° 06' 4.9"

Our helipad coordinates are:

- + S 33° 54' 20"
- + E 19° 06' 08"



GRANDE PROVENCE

1694

Heritage Wine Estate

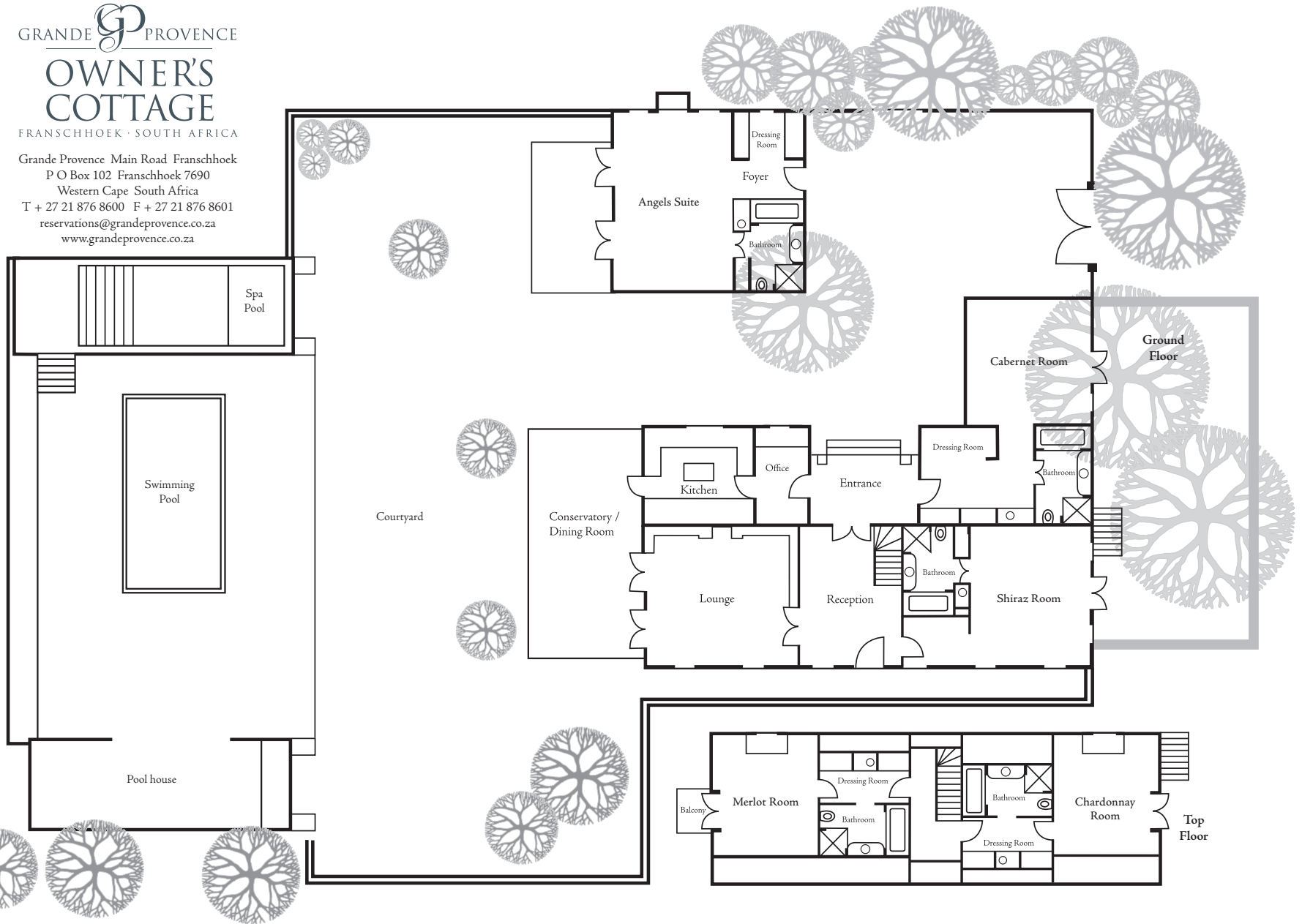
FRANSCHHOEK · SOUTH AFRICA

GRANDE  PROVINCE

OWNER'S COTTAGE

FRANSCHHOEK · SOUTH AFRICA

Grande Provence Main Road Franschhoek
P O Box 102 Franschhoek 7690
Western Cape South Africa
T + 27 21 876 8600 F + 27 21 876 8601
reservations@grandeprovence.co.za
www.grandeprovence.co.za





GRANDE PROVENCE

— 1694 —

Heritage Wine Estate

FRANSCHHOEK · SOUTH AFRICA

THE OWNER'S COTTAGE EXCLUSIVE-USE RATES 2013-2014

	High Summer Season 01 Dec. 2013 – 28 Feb. 2014	Late Summer Season 01 March 2014 – 31 May 2014	Autumn-Winter Season 01 June 2014 – 30 Sept. 2014	Spring-Summer Season 01 Oct. 2014 – 30 Nov. 2014
	Per person, per night	Per person, per night	Per person, per night	Per person, per night
One bedroom/one couple	R 8,350.00	R 7,400.00	R 6,850.00	R 7,400.00
Two bedrooms/two couples	R 5,300.00	R 4,275.00	R 3,975.00	R 4,275.00
Three bedrooms/three couples	R 4,767.00	R 3,697.00	R 3,617.00	R 3,697.00
Four bedrooms/four couples	R 4,500.00	R 3,638.00	R 3,313.00	R 3,638.00
Five bedrooms/five couples	R 4,450.00	R 3,340.00	R 3,070.00	R 3,340.00

Please note:

- The Owner's Cottage is reserved exclusively by one guest or one party (up to 10 guests) and not on multiple individual bookings.

The above tariffs include:

- Exclusive-use of The Owner's Cottage and all its facilities per night.
- Full breakfast and a three-course dinner (lunch excluded).
- Wine tasting, cellar tours and a guided tour of The Gallery.
- The award-winning Grande Provence wines, soft drinks & a selection of spirits.
- 24-hour security.
- Airport transfers to and from Cape Town International.
- Wireless internet access.
- Between 22 December – 05 January, a minimum stay of three nights is required.
- 14% VAT.

The above tariffs exclude:

- Transfers to any destination other than Cape Town International Airport.
- Telephone calls.
- Secretarial services.
- Child minding service.
- Lunch.
- Laundry and dry cleaning.
- Activities off the estate.
- Gratuities.
- Grande Provence clothing collection and wine accessories.